

Data Access

Judith Kruger

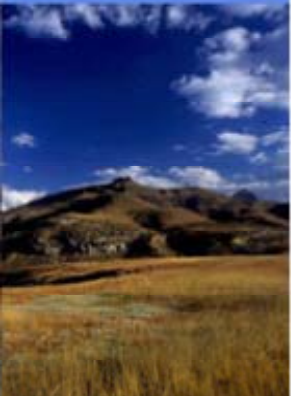
Program Integrator: Science Support



# Requesting data

- First place to look <http://dataknp.sanparks.org>
  - 1. Data is freely available and can be downloaded
  - 2. Following error appears when trying to download the data
- **<error>User public does not have permission to read the document with the docid judithk.334.1</error>**
- This means that there is a lead time protection on this dataset for public use
- All researchers with registered research projects automatically qualify to access these datasets but need to contact [judithk@sanparks.org](mailto:judithk@sanparks.org) for a username and password

–



# •3. You do not find what you need

–Because:

- The data and metadata is not yet online or
- The data does not exist

•In this case either contact your project coordinator or [judithk@sanparks.org](mailto:judithk@sanparks.org) or if you know the dataset owner contact them

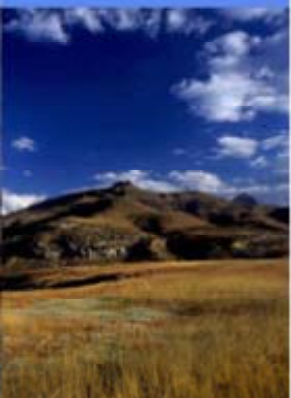
•Requests need to be as specific as possible to help us help you

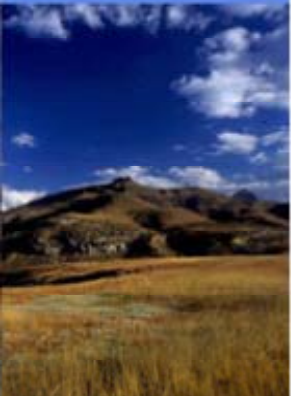
•E.g. Please send me vegetation data

•Could mean

- vegetation classifications
- Biomass
- Vegetation survey data
- Specific species with heights etc
- All or none of the above

•

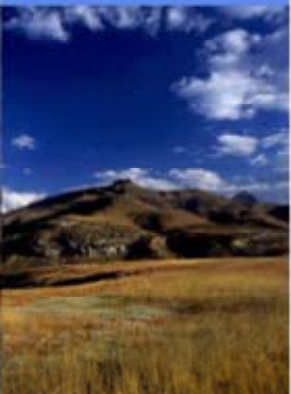




- Please send me all your GIS data
  - Request are very labour intensive as we do not have dedicated data technicians
  - As the amount of data sets increase in the data catalogue especially all the spatial data this problem will be resolved

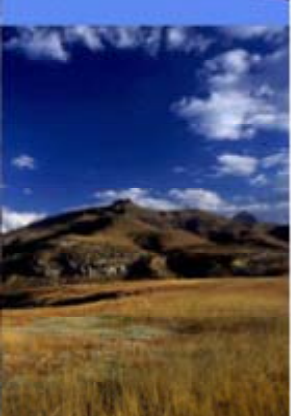
# Inaccurate data and time lags

- Try to be as up to date as possible but there are certain time lags e.g rainfall data
- Errors in data- historical data that we have inherited so know not perfect
- Please help us correct our data by making us aware of these errors; eg herbivore counts



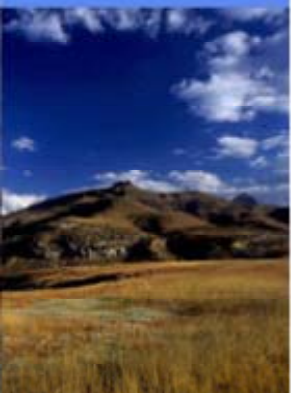
# Adding your data

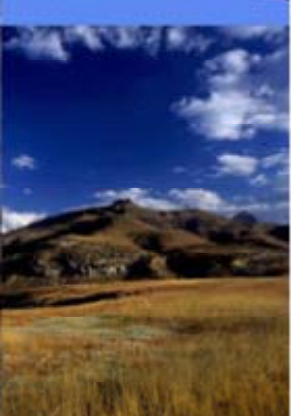
- At the moment we add research project data
- When you submit your final report we ask you to send your data and metadata
- Metadata requirements are on the web.
- Difficult to add data if metadata is not done correctly



# General metadata required for the whole studies data :

- .
- **Abstract** for the dataset.
- **Geographic coverage.** Area of the study needs to be stipulated eg Entire KNP or where you are working with transects the beginning and end point coordinates need to be given. If points are used then a GPS point for each should be given.
- **Temporal coverage.** The dates that the data was collected.
- **Keywords.**
- **Taxonomic coverage** of the dataset. Please provide the genus and specie name of the individuals that were sampled in your dataset. This can be provided in a table format.
- .





**Data Usage rights.** Enter a paragraph that describes the intended usage rights of the data. Specifically include any restrictions (scientific, technical, ethical) to sharing your data within the public scientific domain. If your dataset is lead time protected please include the length of this period.

**Access control** .If you do want to restrict the dataset but have certain people that you would like to be able to access this data they should be mentioned here.

**Methods.** The methods of the study should be discussed here. If you already have them in your project proposal please just copy and paste them.

**People and organizations.** Please supply the contact details of the people that you would like to be associated with the dataset and also the role that they played on the dataset e.g metadata provider, principal investigator



# Tabular Data

**Column heading**

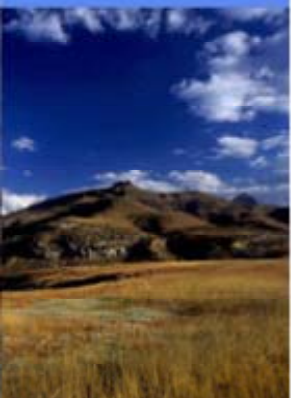
**Column description**

**Type of variable** i.e numeric, date/time, enumerated( i.e if you have codes you need to describe all the codes used. This description may be in another text file then just indicate that here.

**Measurement unit** eg mm, parts per million(ppm) etc.

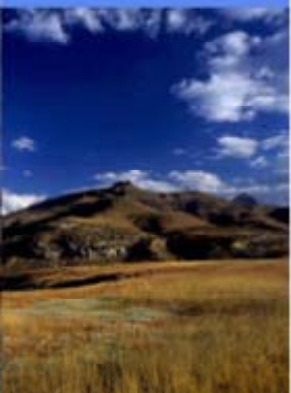
**Precision** of the measurement i.e if your measurements are in meters and your precision is 1 it means that your measurement is accurate to the nearest meter.

GIS Data needs FGDC metadata



# Adding your data

- Encourage you all to submit datasets and metadata. If you are still writing up we can protect the data until you have completed your degree.
- Can also send .jpeg files of posters
- Please also submit your publications to [guinz@sanparks.org](mailto:guinz@sanparks.org)



# Kruger National Park Data Repository



[KNP Home](#)

[Repository Home](#)

[Search for Data](#)

Welcome to the Kruger National Park Data Repository. This is the primary source for comprehensive information about scientific and research data sets collected within the KNP.

## Repository Tools

- Search for Data

The repository search system is used to locate data sets of interest by searching through existing registered data sets. Presently the search covers all fields, including author, title, abstract, keywords, and other documentation for each data set. Use a '%' symbol as a wildcard in searches (e.g., '%biodiversity%' would locate any phrase with the word biodiversity embedded within it).

- [Browse existing KNP data sets](#)

Browse all existing data sets by title. This operation can be slow as the number of entries in the repository grows.

- Login

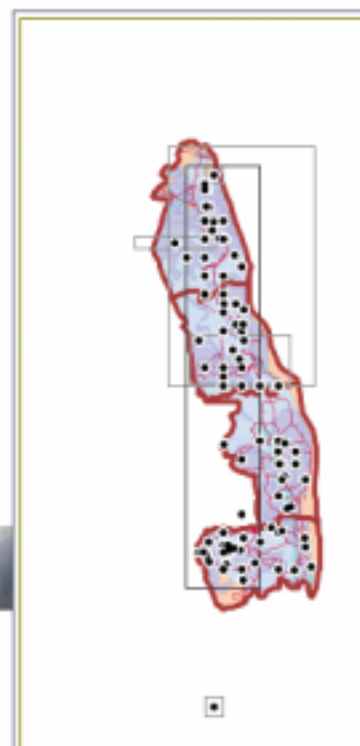
username:

organization:

password:

- Manage your account

- [Change your password](#)
- [Reset your password](#)



- Dataset Points
- Dataset Bounds
- Kruger Park boundaries
- Kruger Park business uni
- Kruger Park roads
- Kruger soils

# Kruger National Park Data Repository

[KNP Home](#)

[Repository Home](#)

[Search for Data](#)



## 39 data packages found

Title	Contacts	Organization	Keywords
<a href="#">» A GIS Model of Bovine Tuberculosis in the African Buffalo (<i>Syncerus caffer</i>) Population of Kruger National Park, S. Africa</a> ID: judithk.348.1	Ryan	Universit of California Berkeley	GIS model, Bovine Tuberculosis, Buffalo
<a href="#">» Ant-plant dynamics: the effects of leaves and scale insects on ant species richness and abundance on <i>Acacia grandicornuta</i> and <i>Acacia robusta</i></a> ID: judithk.685.3	Kruger	SANParks	Acacia grandicornuta,, Acacia robusta,ant-plant mutualism,Lepisiota capensis,scale insects
<a href="#">» Assesment of strip transect and Distance sampling on aerial surveys of elephants in Kruger National Park</a> ID: judithk.131.7	Griffin	University of Massachusetts	African elephants Distance sampling Strip transects
<a href="#">» Automatic weather station data for the Kruger National Park (2007)</a> ID: judithk.766.11		SANParks	Rainfall,Temperature, RelativeHumidity, Wind speed, wind direction
<a href="#">» Bone density and Calcium and Phosphorus content of the giraffe (<i>Giraffa camelopardalis</i>) and African buffalo (<i>Syncerus caffer</i>) skeletons</a> ID: judithk.204.9	Van Schalkwyk	University of Pretoria	Giraffe Buffalo Calcium content Phosphorous content
<a href="#">» Determining Dominance: The correlation between access to food and group defense in African buffalo</a> ID: judithk.697.6		SANParks	African buffalo, cows, dominance hierarchies, Syncerus caffer
<a href="#">» Development of a remote sensing based index for monitoring vegetation structure</a> ID: judithk.697.6	Kruger	SANParks	Experimental Burn Plots



# Thank you

- Staff at NCEAS
- A.W. Mellon Foundation
- Researchers and scientists that have and will be contributing and using data

[judithk@sanparks.org](mailto:judithk@sanparks.org)  
<http://dataknp.sanparks.org>

